

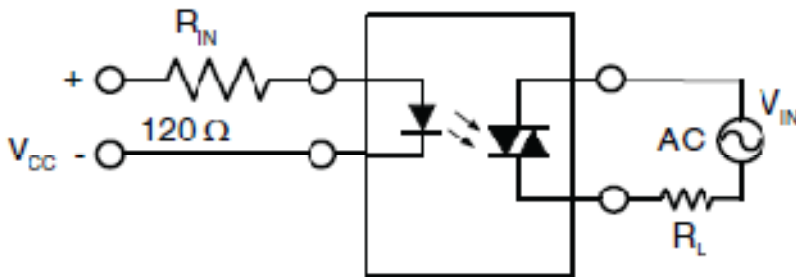
# AC Solid State Relay Board Technical Information

**AC Solid State Relay Board:** This is a opto-Triac with optical isolation between input signal and output signal. This is to be used for switching 24V-600VAC, 50/60Hz supply by 5V-230 VDC input signal.

## Features

- DIN rail mountable
- Eight/Four phototriacs on a single board
- LED indication for input signal
- Positive supply common/negative supply common selection by jumpers for i/p signal.
- Output points in one/two groups. Each group consists four o/p points.
- Individual o/p point can be grouped / ungrouped by jumper selection

Application Diagram:



Product Picture:



## Technical specifications:

**Input signal voltage:** 20 VDC-28VDC, Typical voltage is 24VDC

**Max. input current:** 20 mA @24VDC

**Max. output voltage:** 600 VAC

**Min. output voltage:** 24 VAC

**Max. load (rms) per output point:** 1 Amp

**Peak non repetitive surge current:** 10 Amp

**Input to output electrical isolation:** 3.55 KV

**Max. Voltage drop in output voltage:** 1.7 V @ 1 Amp load

**Switching delay Off to ON and ON to OFF:** Less than half cycle

**Load type:** Resistive and Inductive

**Applications:**

- a) For switching contactors from PLC outputs.
- b) For switching AC loads like single phase motors, AC actuators, AC solenoid valves, AC electromagnets in industrial use directly from controller outputs.
- c) To switch Air conditioner, microwave ovens, washing machines, personal hygiene systems, refrigerators, fan heaters, domestic fans, inductive heating cookers, water heaters directly from controller outputs.
- d) In all applications where we need very fast switching and require isolation between driver and driven circuits. The load can be inductive or resistive.

**Solid State Relay Board Vs Relay Board Comparison:**

Sr.No	Solid State Relay Board	Relay Board
1	Switching time 10 mS max	Switch ON time 20mS and Switch OFF time 20 ms
2	No limitation on number of operations at 1 Amp load	300,000 operations is limit at 2A/230 V load
3	Space 120x87(mm) for 8points	Space 150x87(mm) for 8 points
4	Max. load 1A per point	Max. load 2A per point
5	To be used for AC switching	Can be used for AC/DC switching

Available in 4/8 points variants.

Solid State Relay boards with input signal other than 24VDC can be supplied on demand.

**Standards/Approvals:**

- CE certified
- PCB:IEC 61373
- Optotriac:UL/VDE
- Connectors:CE
- Profile and end plates:UL

**Caution :DO NOT USE SSR BOARD FOR SWITCHING DC SUPPLY !**

**NOTE:-Due to continuous product development the product supplied to you may look different than the product image in the pdf file.**

**Manufactured by:**

**Q-Log Controls and Systems**

**S.No. 6/9, Flat No. 11, Sonai Heights**

**Near Narhe-Ambegaon Flyover, Bhumkarnagar**

**Narhe, Pune: 411041**

**Mail:qlogcontrols@gmail.com / sales@qlogcontrols.com**

**Web:www.qlogcontrols.com**